

HAKI Universal

HAKI Universal is a modular scaffolding system that can be utilised on applications from the simple to the most complex. For even advanced constructions in building projects, industries, shipyards, offshore installations and refineries.

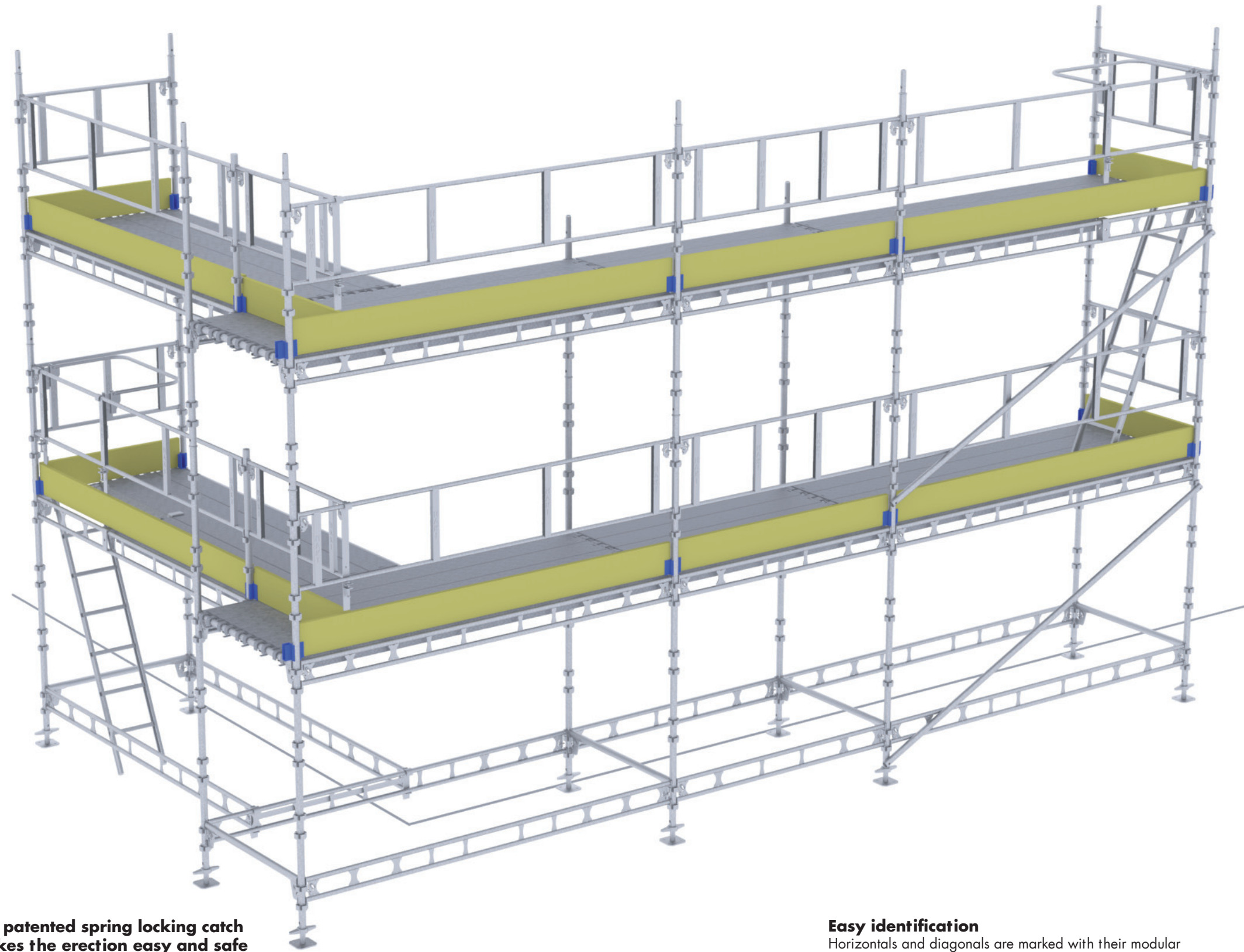
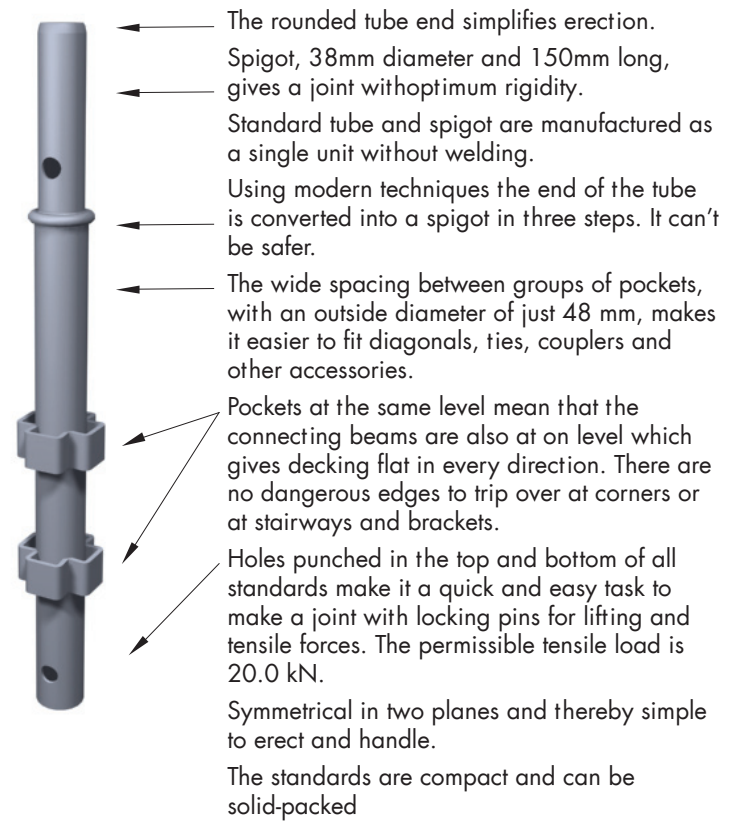
The scaffolding system is particularly adaptable with respect to bay size and load class and is compatible with HAKI Ram and earlier HAKI generations.

Type Examination Certificate in accordance with the requirements of AFS1990:12 and SS-EN 12810-1 - Certificate No. 14 55 01 - for load classes 1 - 6 (0.75 - 6.0 kN/m²).

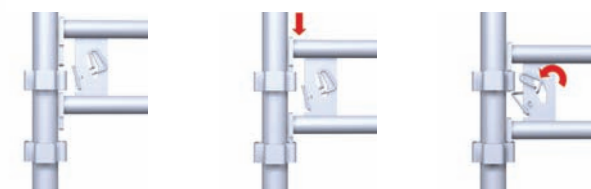
The components range includes brackets, ladders, stairs and suspension devices.

The components can also be used for erection of stair towers, mobile towers, sign towers, stages, stands and other temporary constructions and be included in HAKITEC Weather protection systems.

HAKI standard is designed to meet all current European regulations, directives and standards, and is ideally suited to modern scaffolding methods and production techniques



The patented spring locking catch makes the erection easy and safe



The spring locking catch is primarily designed for manual locking. The catch can be moved easily with the thumb to a distinctly locked or unlocked position. The spring locking catch makes it possible to erect from distance. There is no risk of any moving parts of the construction jamming as a result of painting, blasting and corrosion.

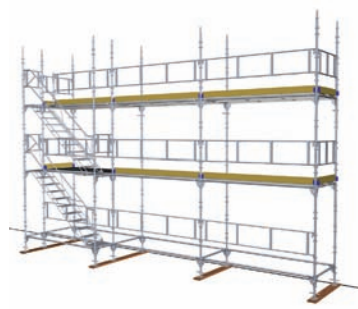
Easy identification

Horizontals and diagonals are marked with their modular dimensions (cc size standards) and a colour code. The marking is an excellent means of identification when erecting and handling the scaffolding materials.

564	700	770	1010	1050	1250	1550	1655	1964	2050	2210	2357	2500	2550	3050	3650	4050
-----	-----	-----	------	------	------	------	------	------	------	------	------	------	------	------	------	------

<p>Adjustable Base Jack Adjusts to suit application 55-570 mm</p>	<p>Standard Standard joint with spigot Pockets at the same level Tube diameter 48 mm Sizes range from 500-3000 mm</p>	<p>Ledger Beam Tube diameter 34 mm Sizes range from 1050-3050 mm</p>
<p>Single Tube Beam Tube diameter 48 mm Sizes range from 564-3050 mm</p>	<p>Guardrail Frame Tube octagon 28 mm Sizes range from 700-3050 mm</p>	<p>Intermediate Transom Scaffold boards are fully compatible with the system using the intermediate transom for support</p>
<p>Puncheon Unit Create an off node vertical connection anywhere along the beam and add standard</p>	<p>Beam Rider Unique bay sizes can be created with an off node connection anywhere along the beam</p>	<p>Return Transom Can be used to form a return instead off the ledger beam in place of two beam riders</p>
<p>Bracket without spigot Tube diameter 48 mm Width 230 - 400 - 460 - 600 mm</p>	<p>Bracket with spigot Tube diameter 48 mm Width 514 - 700 - 720 mm</p>	<p>Bracket Adjustable Adjustable 460-690 mm 2-3 board bracket gives the option of increasing the width of a scaffold without additional support legs</p>
<p>Steel Plank Up to load class 6 230 mm wide boards</p>	<p>Aluminium Plank Up to load class 6 230 mm wide boards</p>	<p>Locking Pin Locks standards together when used in suspended applications, for crane lifted sections or for weather protection applications</p>
<p>Stair UTV UTV stair and handrail creates a stair tower in place of a ladder Stair and handrail in aluminium or galvanized</p>	<p>Ladder Access ladder with hooks to replace tying</p>	<p>Suspension Devices Various sizes suspension devices available to suit application</p>

HAKI Applications



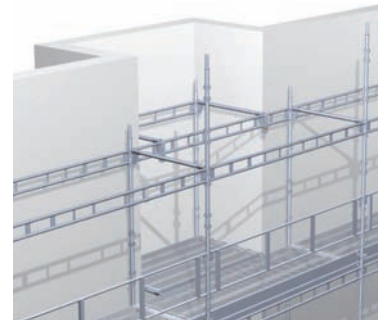
Independent
Load classes 1 - 6
Bay width 700, 770, 1050, 1250, 1655 mm
Decking: Decking unit, steel plank, aluminium plank



Crane Lifted
Same standard for all applications, just add a locking pin for crane lifted sections, suspended or weather protection.



Suspended
Permissible tensile load in standards 20.0 kN
Decking: Decking unit, steel plank, aluminium plank



Beam Riders
Beam riders increase the versatility of the system to a significant extent.



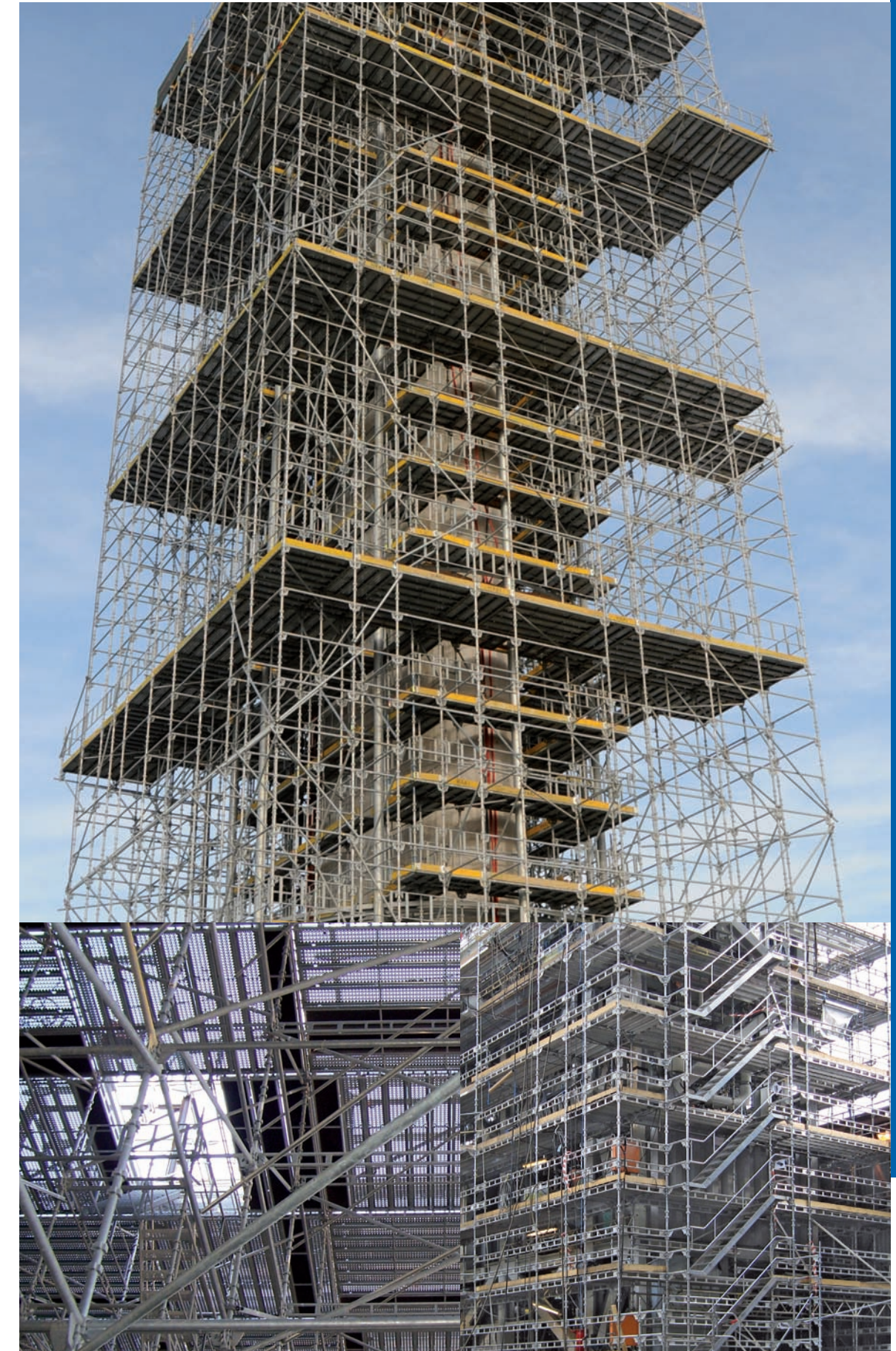
HAKI Stairs
Stair Tower Symmetrical
Stair UTV
Public Staircase



Circular
Safe and simple ways to erect a circular scaffold using key components.



HAKI Universal - just hook on



HAKI – temporary work-places ensure the highest standard in safety whilst increasing productivity
SAFE – product development, quality assurance and modern production
ADAPTABLE – a few basic components for both scaffolding and weather protection
PRODUCTIVE – increase productivity in your daily work
EXPERT – training, technical support and project engineered solutions



HAKI AB • SE-289 72 Sibbhult, Sweden • Tel +46 44 494 00 • Fax +46 44 494 72 • info@haki.se • www.HAKI.com



© HAKI INT 2014.10 P200002 Graphic design Ekestad Design AB